

HDMI to AV Cable User Manual

- Set the HDMI resolution of the camera to “Auto”
- Set the Drive Mode of the camera to “Remote Cdr.”
- Install the HDMI module to the camera; connect the shutter control wire with the receiver
- Install the optical fiber cable to the convert module, and paste the other ends of the optical fiber cable outside of the camera infrared receiver window.

If the users want to control taking photos and recording video, you need to use a 3 position switch on the radio, and connect the shutter cable to the corresponding channel on the receiver.

If users could not connect the shutter cable to the receiver, this module could not control the camera to take photo or record video.

Note: When you install the optical fiber cable, please cut the cable by sharp knife to guarantee the smooth of the end face, increase the translucency.

The 3 position switch on the radio:

1. Upper position-----take picture
2. Middle position-----Blank
3. Lower position----record video

Note: Before you turn the camera on or power the receiver, the position of this switch should be in middle position, this is very important.

When the shutter control switch is in middle position, the red LED is on.

Take Picture Control

When you move the shutter control switch to upper position from middle position, the camera begin to take pictures continuously. At this moment, the red LED light flash two times every second. If you want to stop taking photos, just move the switch to middle position.

Record Video Control

When you move the shutter control switch to lower position from middle position, the camera begin to record video, and the video saved on your memory card on the

camera. At this moment, the red LED flash fast. When you move the switch to the middle position, the camera will stop recording the videos and save the files.

Note: When you move the switch from middle position to lower position, from lower position to middle position, make sure there is at least 5 seconds between those two actions. You should give camera enough time to respond. If you many instructions to the camera in short time, it may make the camera control logical mess, and destroy the record video files.

This HDMI cable does not support the high voltage receiver; the power supply of the receiver should be 4.8V to 6V. Beyond this range, it may burn the module.

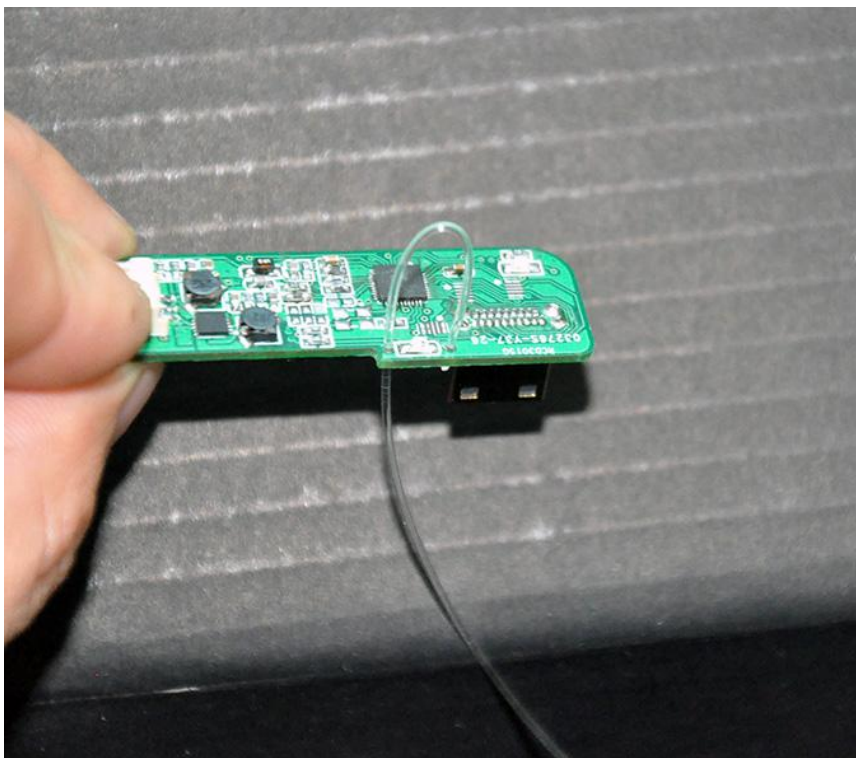
Without receiver control signal, the LED flashes about 4 times every second, you can check whether the receiver is power or not, or whether you turn on the radio.

FPV-Cable-002 is applicable to Sony NEX-5, 5N, 5R, 5T, 5TL, 6R, 7N, 7R, Nikon D90 D3X.

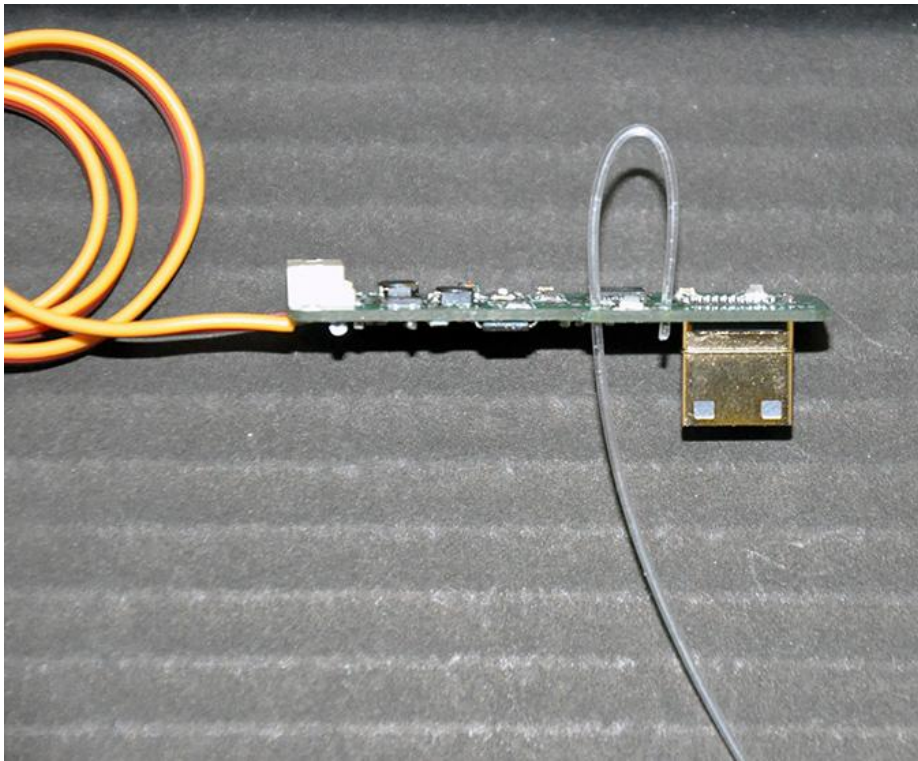
FPV-Cable-016 is applicable to Sony A5000/A6000.

How to Install the Optical Fiber Cable and Set on the camera

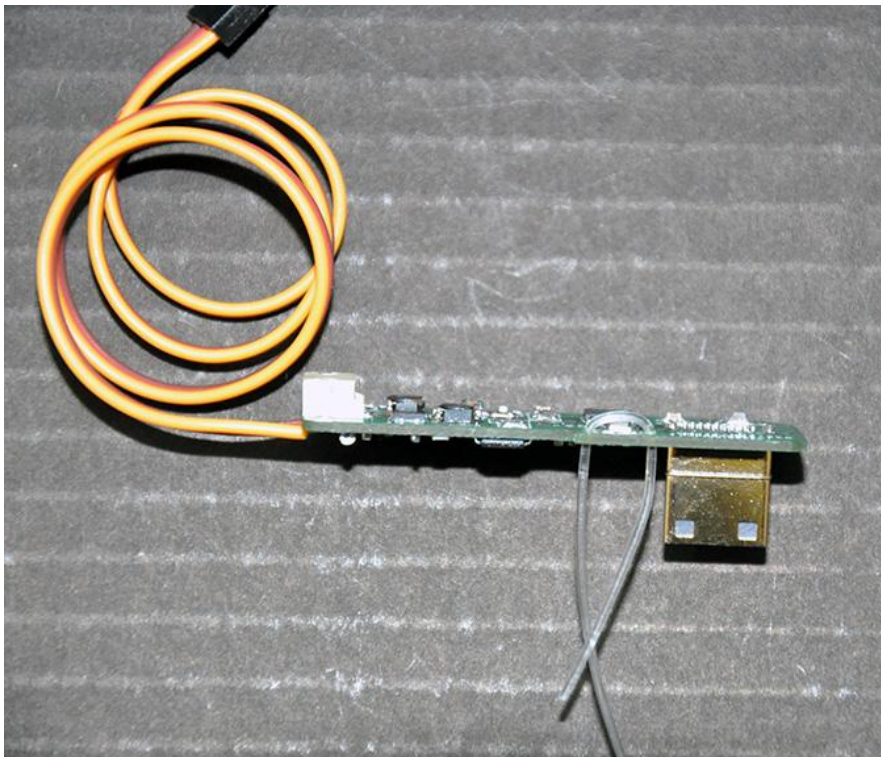
1. Put the optical fiber cable through the two holes on the sides of the infrared LED. We suggest the cable should be next to the LED, and cut about 1mm of the cable outside.



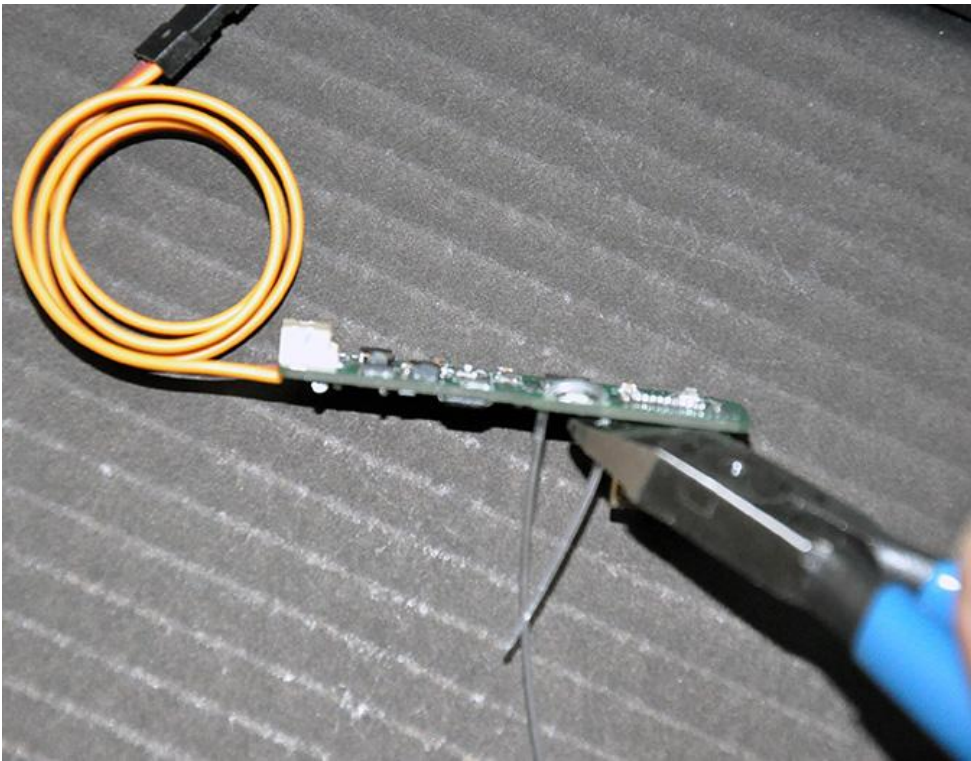
If you have needle file, you can use it to make the boarder of the holes smoother, avoid cutting the optical fiber cable during the installation process.



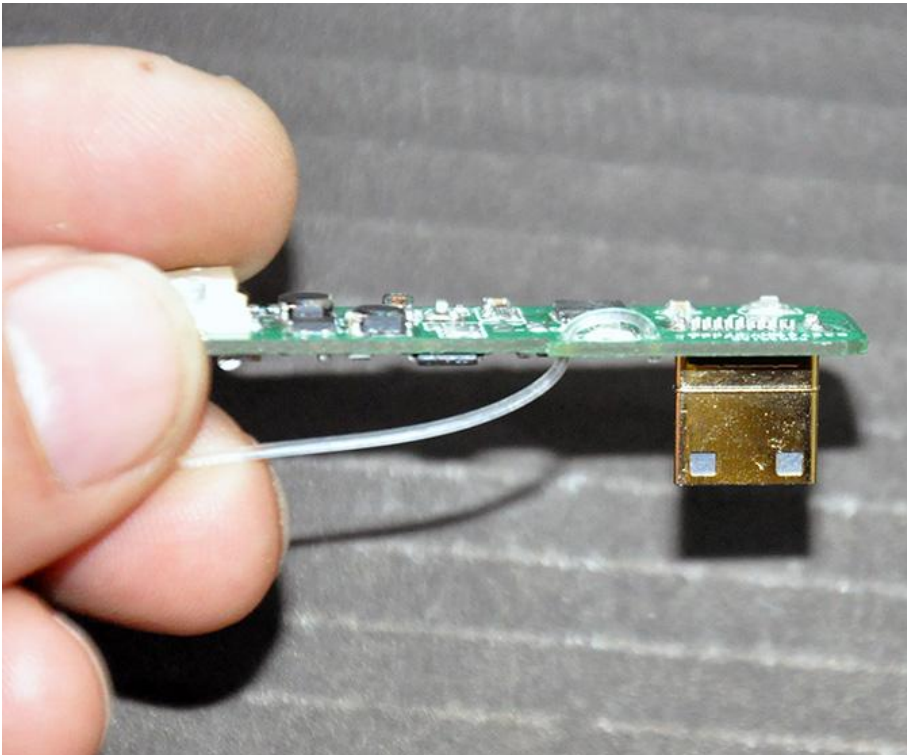
2. Tighten the optical fiber cable; make sure the optical fiber cable is close to the LED.



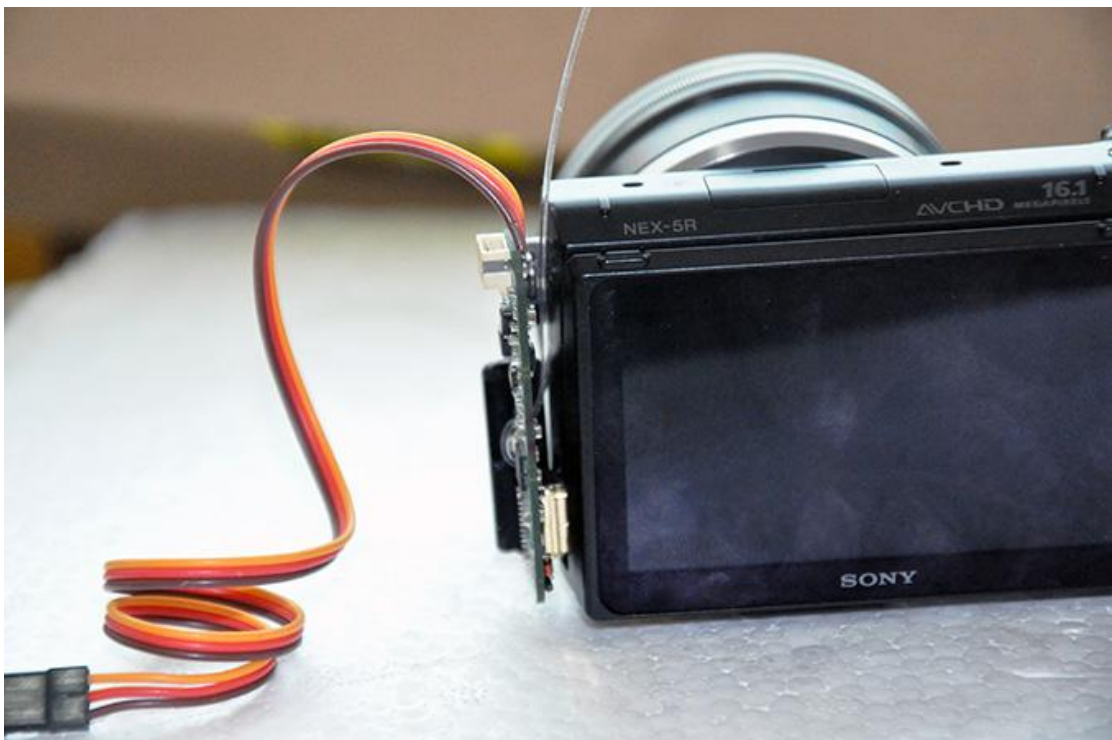
- Cut the rest of the optical fiber cable by tools. Please keep them, you still need them in future.



When you install the optical fiber cable, it should be like this (Note: When you install the cable, pay attention or it may break off.)



4. Plug the module to the camera. Put the other ends of the optical fiber cable to the infrared receiver window of the camera.



5. Measure the length of the optical fiber cable and cut it. Cut small part of the cable which you will paste it with the infrared receiver window. The cut surface should be smooth.



6. Paste the optical fiber cable to the camera infrared receiver window by tape. This finished the installation of the optical fiber cable.





7. You need to set the Drive Mode of the camera to “Remote Cdr.”





8. Set the camera HDMI resolution to Auto

